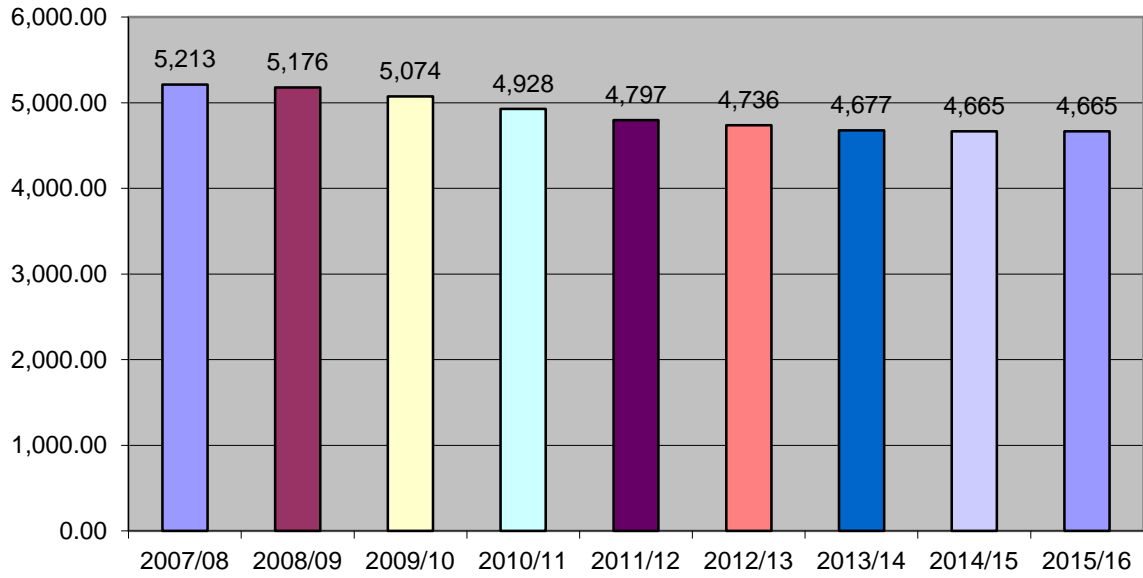
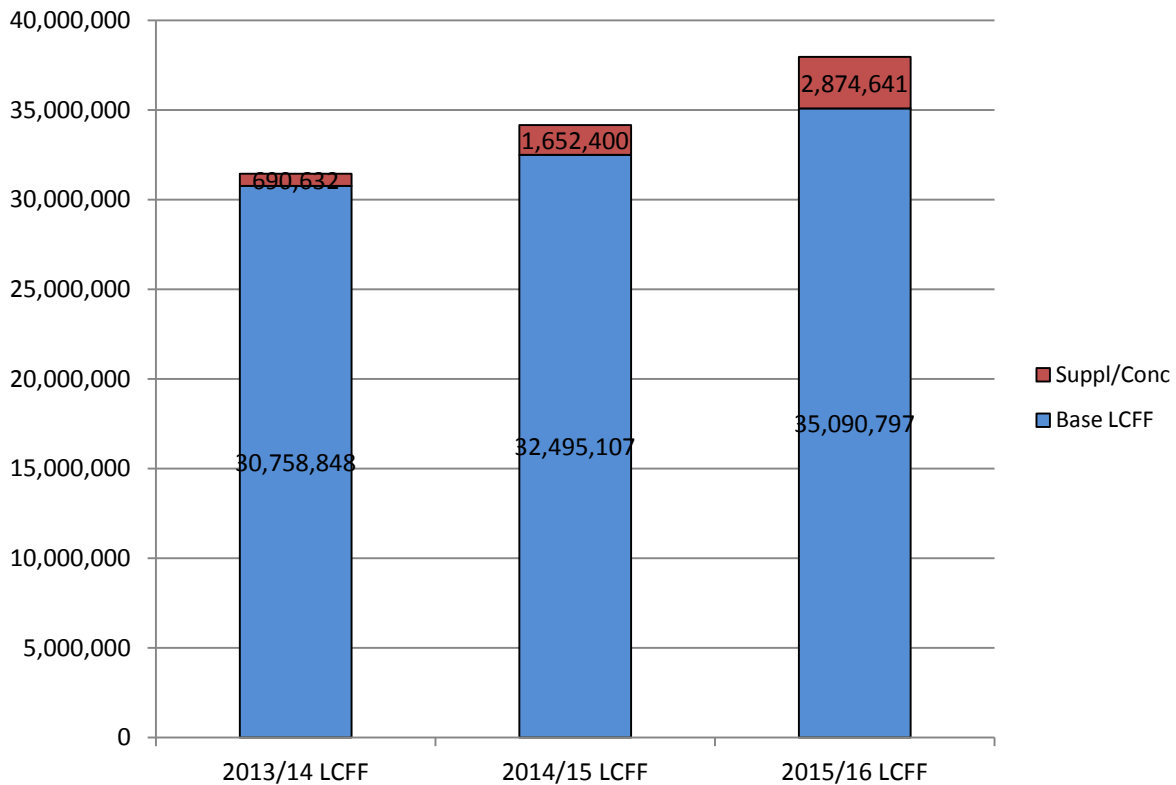


## Enrollment (P-2 ADA)

*2015/16 = Projection*

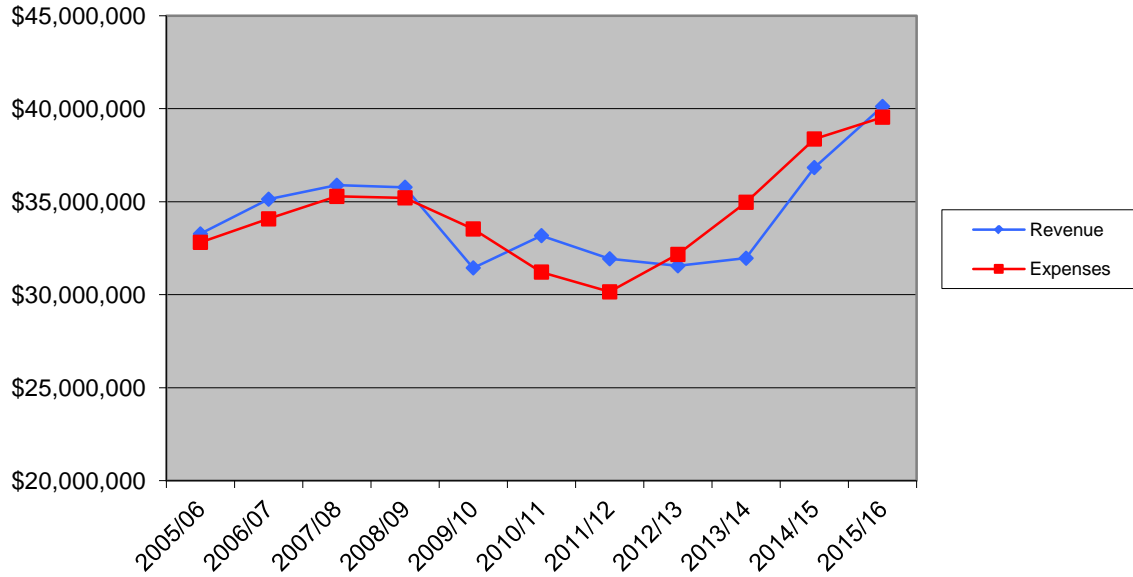


## SSUSD Local Control Funding Formula (LCFF)



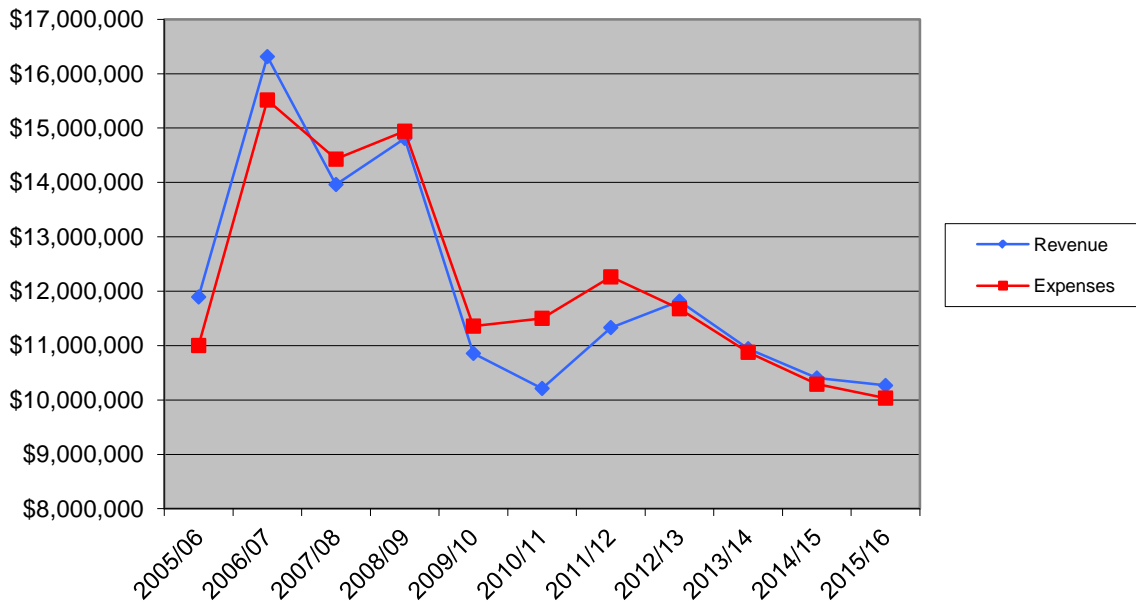
## Unrestricted Revenue vs Expenditures

2015/16 = Projection



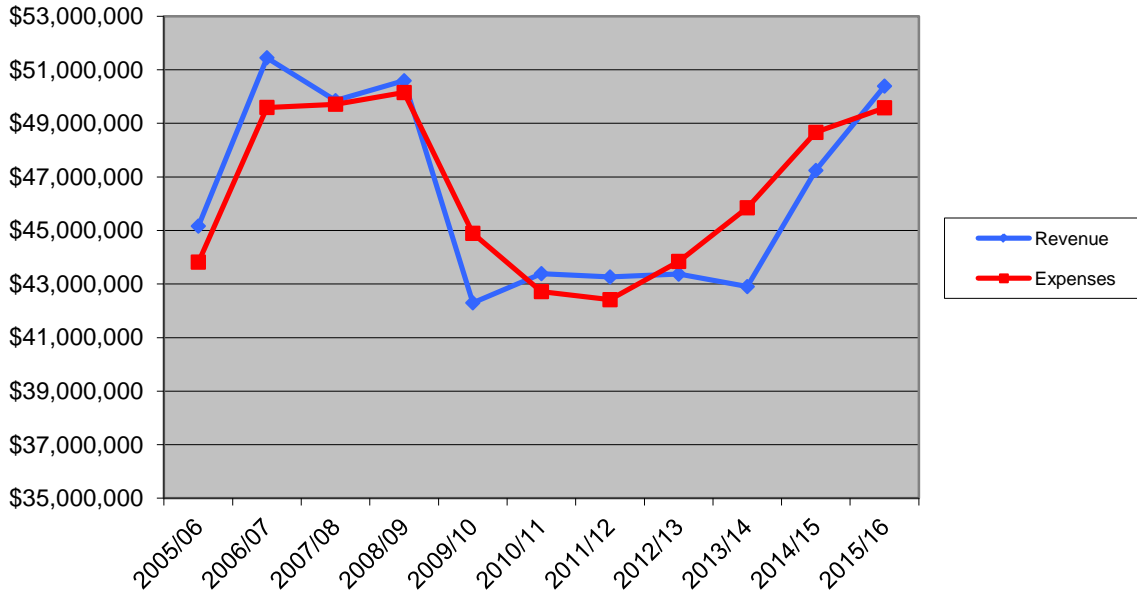
## Restricted Revenue vs Expenditures

2015/16 = Projection



## Total General Fund Budget

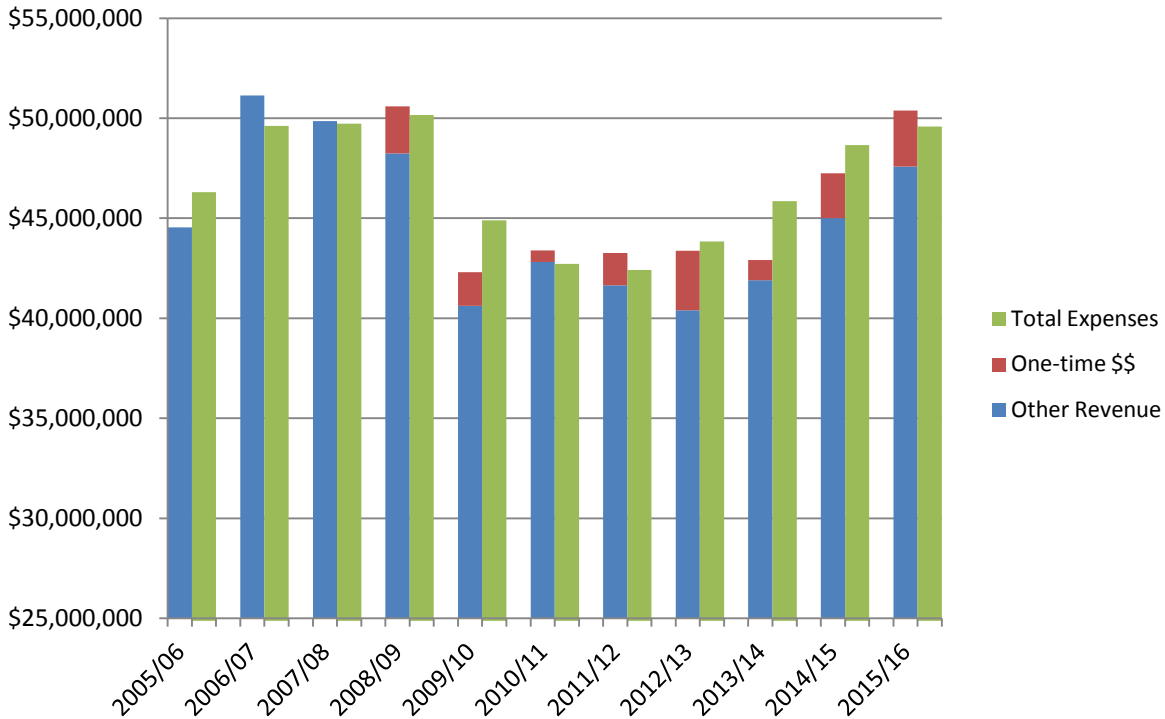
2015/16 = Projection



## One-time \$\$ in Total General Fund Budget

2015/16 = Projection

One-time \$\$ includes: SFSF, ARRA, Fed Jobs, Addtl Impact Aid, PY RL adjustment, Common Core, Mandate Reimb, RDA facilities funds



# Ending Fund Balance - General Fund

2015/16 = Projection

