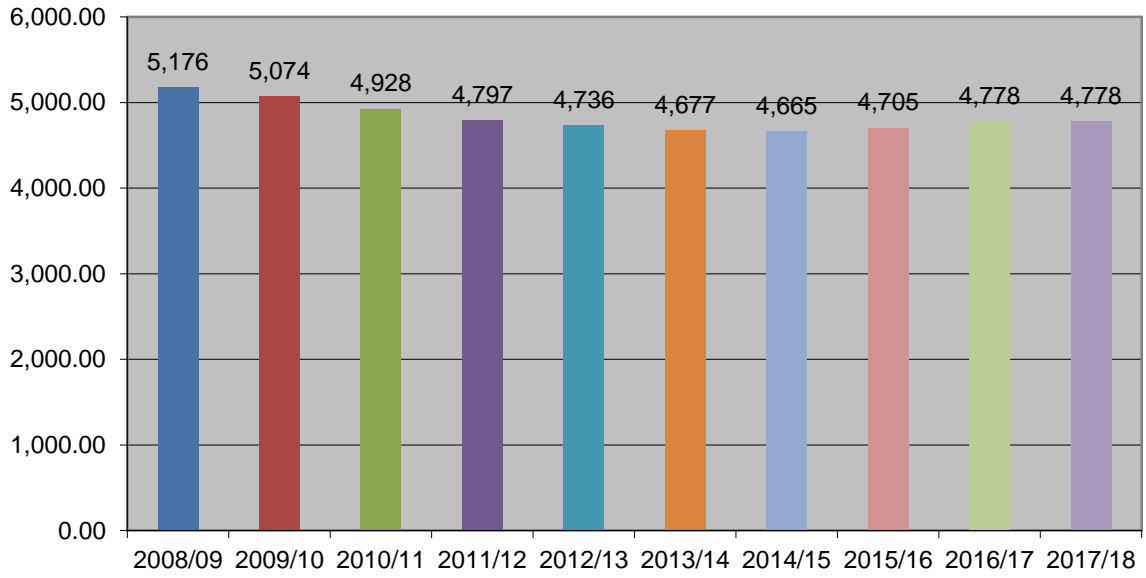


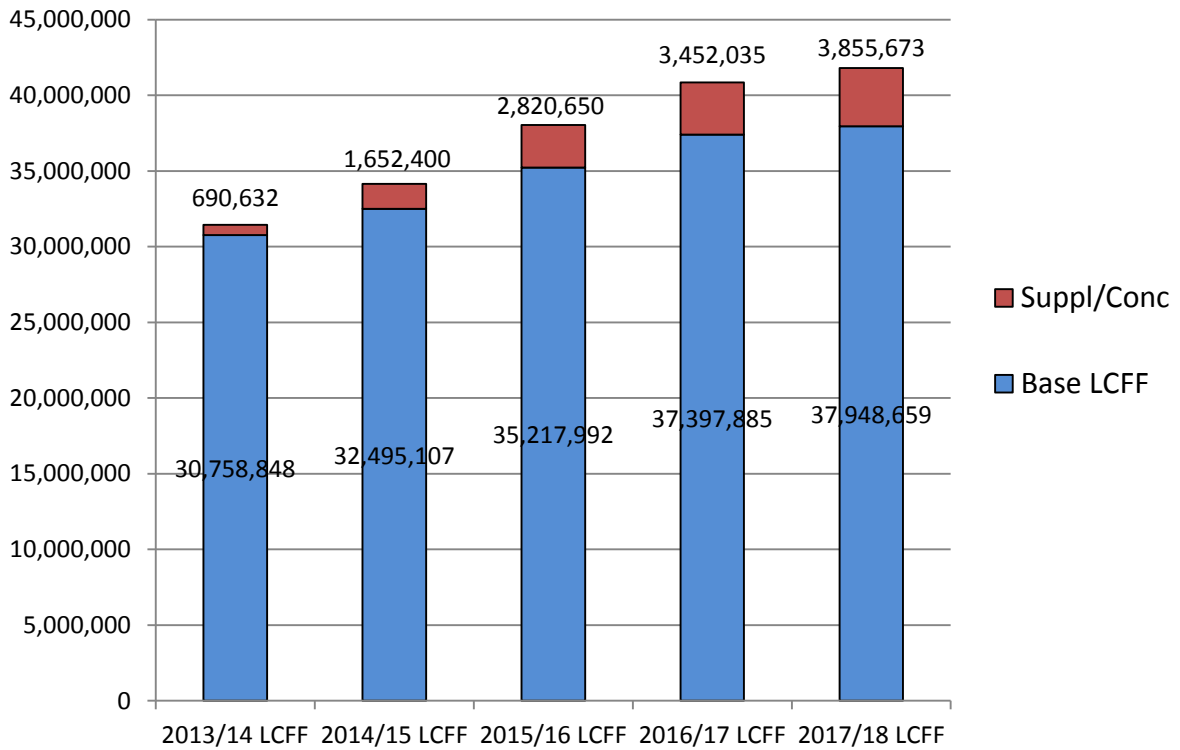
Enrollment (P-2 ADA)

2016-17 = Actual P-2



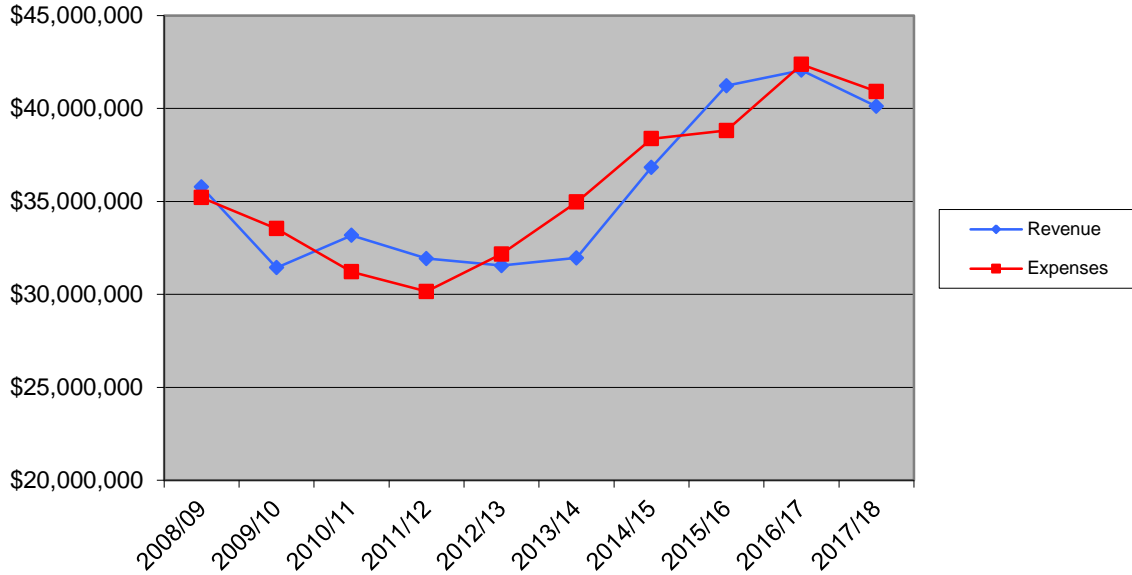
SSUSD Local Control Funding Formula (LCFF)

2017/18 = Projection



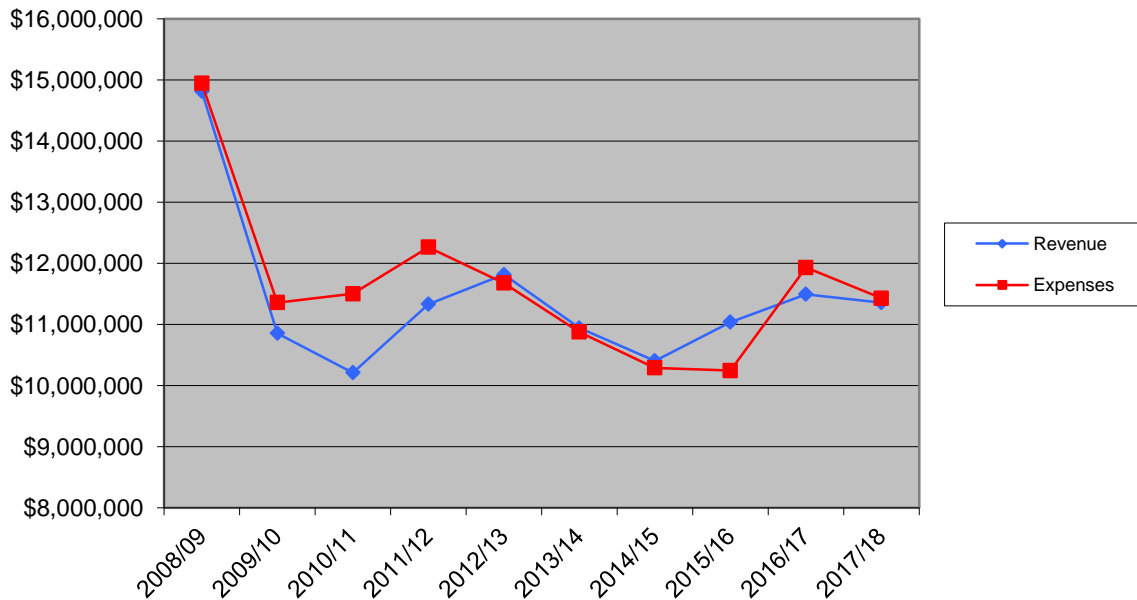
Unrestricted Revenue vs Expenditures

2017/18 = Projection

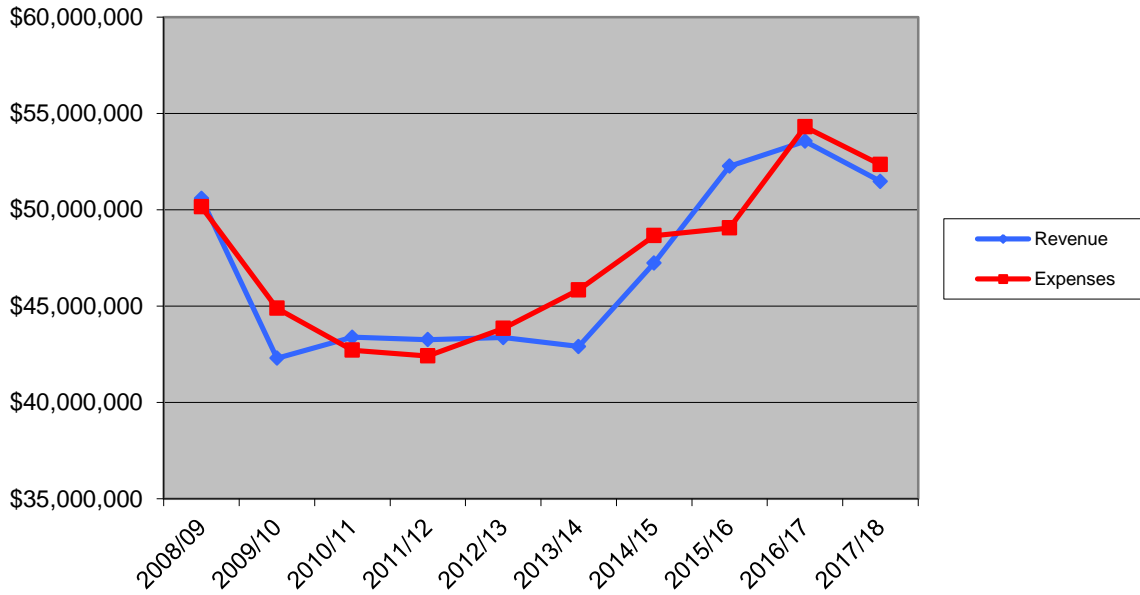


Restricted Revenue vs Expenditures

2017/18 = Projection

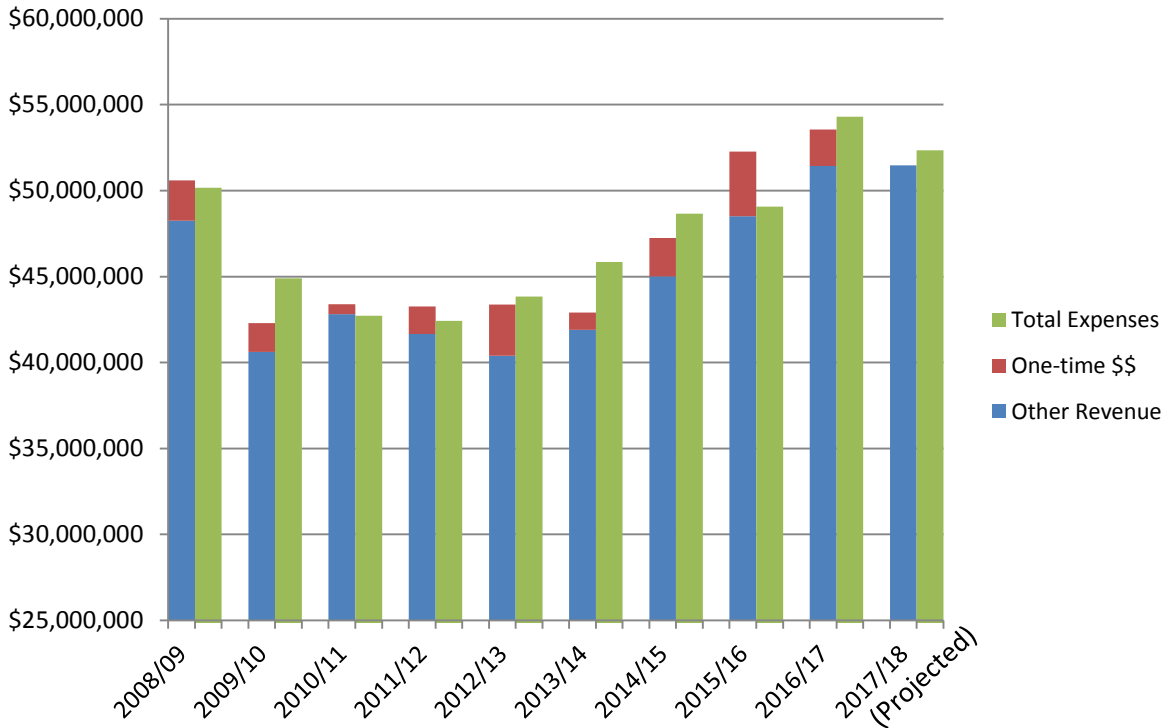


Total General Fund Budget 2017/18 = Projection



One-time \$\$ in Total General Fund Budget 2017/18 = Projection

One-time \$\$ includes: SFSF, ARRA, Fed Jobs, Addtl Impact Aid, PY RL adjustment, Common Core, Mandate Reimb, RDA
Facilities Funds



Ending Fund Balance - General Fund

2017/18 = Projection

